

CSE : **PTX** OTCQX : **PANXF**

GERMANY : **9PX**

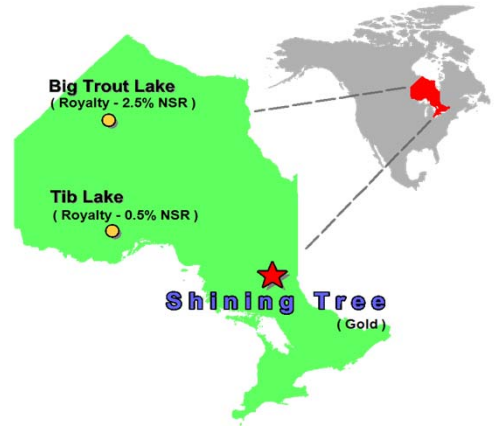


## A REVIVAL GOLD STORY IN AN ABITIBI GOLD CAMP

**Platinex Inc.** is an exploration company in Ontario’s Abitibi Region, a very favourable mining jurisdiction.

The Companies Shining Tree property is the largest holding in the Shining Tree gold district at 20,750 hectares (51,274 acres) situated along the Ridout-Tyrrell trend

The Shining Tree property is situated between the Jubu deposit owned by Caldas Gold to the east and the mine development-stage Cote Gold deposit to the west owned by IAMGOLD.



### Investment Highlights

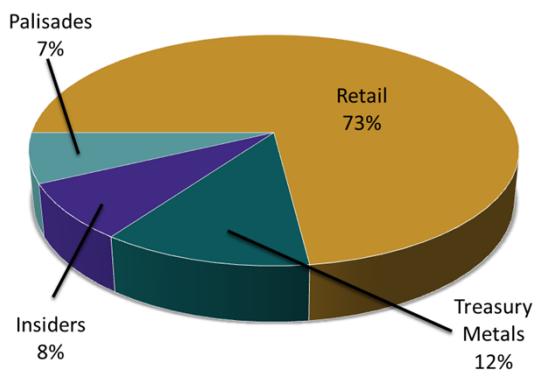
<b>ONTARIO</b> : Operating in the 2 <sup>nd</sup> best mining district in Canada.	<b>CAPITAL</b> : Platinex recently raised \$1.5 M
<b>ROYALTIES</b> : Platinex owns a portfolio of royalties.	<b>DRILLING</b> : Platinex is commencing a mid December exploration program
<b>MINERLISATION</b> : Platinex is working on 4 zones of interest: Ronda, Herrick, Caswell and Churchill. Substantial potential to expand exploration activity and targets have been identified	

## Capital Structure

Shares Outstanding:	145,130,260
Options:	10,875,000
Warrants:	53,830,965
Fully Diluted:	209,836,225
Market Capitalization:	CAD\$ 8M
<b>Market Data CSE</b>	<b>CAD\$</b>
Closing Price:	0.055
52 – Week Range:	\$0.01 - \$ 0.125

Note: Market data as of November 8

Platinex Shareholders



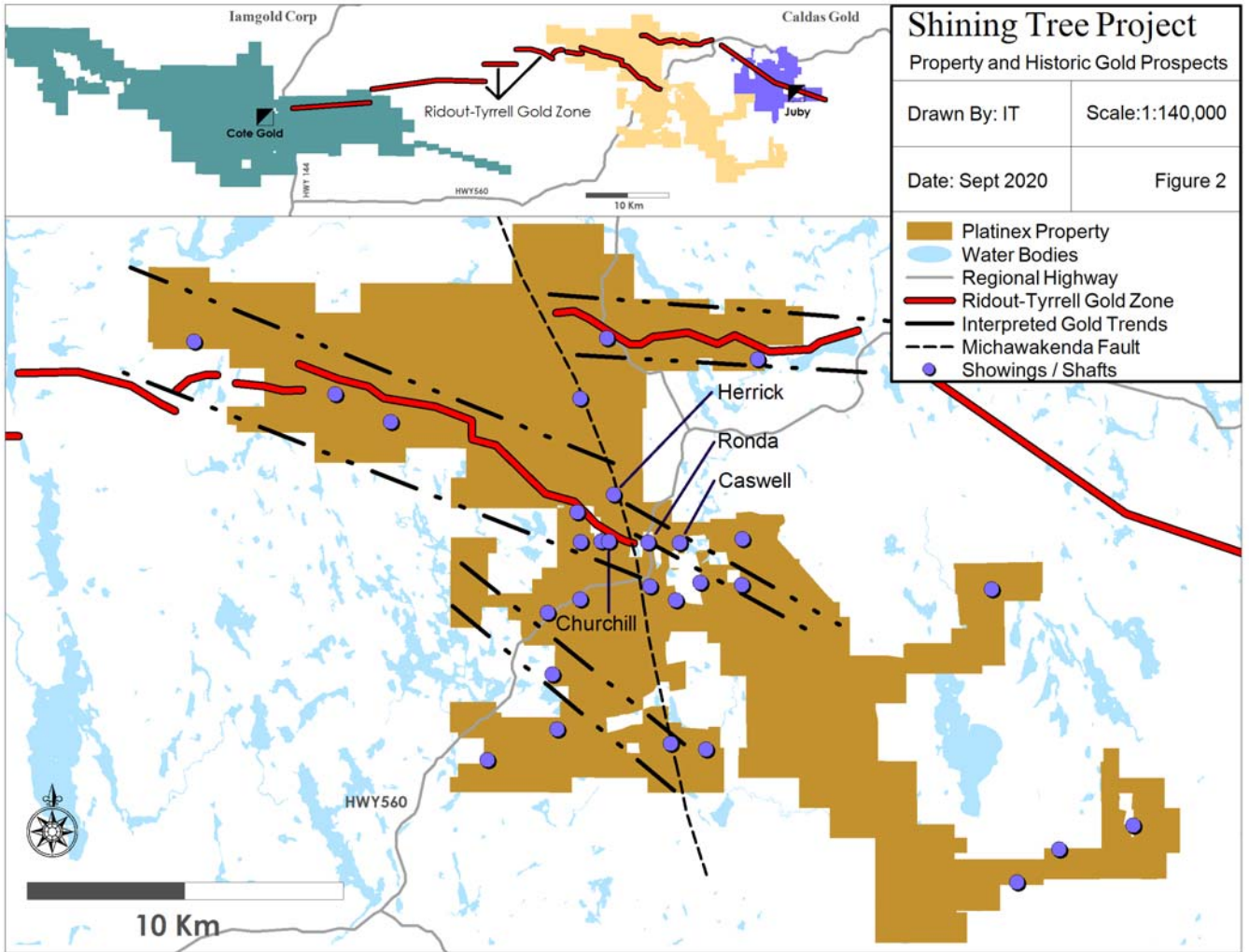
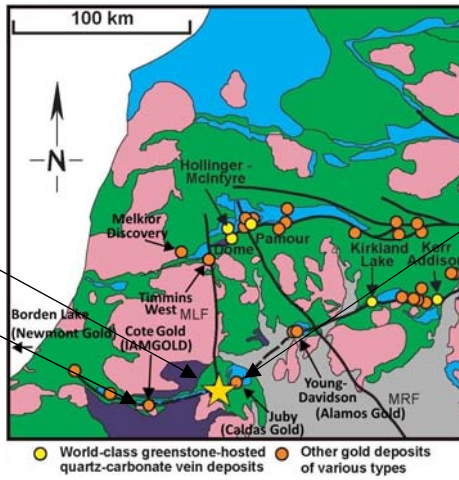
The opinions, estimates and/or projections contained herein are those of Platinex Inc. (PTX) as of the date hereof and are subject to change without notice. Platinex makes every effort to ensure the contents herein have been compiled or derived from sources believed reliable and contain information and opinions, which are accurate and complete. However, Platinex makes no representation or warranty, express or implied, in respect thereof, takes no responsibility for errors or omissions which may be contained herein and accepts no liability whatsoever for information and its contents. The information contained herein is not to be construed as, an offer to sell or solicitation for an offer to buy, any securities. The officers, directors or employees may from time to time acquire, hold or sell securities mentioned herein.

# Platinex Land Position

Platinex's Shining Tree

Cote Gold (IAMGOLD)

Juby (Caldas Gold)



To date 4 areas of interest have been found with prospective gold intersections

## Drill Results

Ronda (unqualified)	9m at 1.22 g/t	1.5 m at 82.08 g/t	16.4 m at 2.09 g/t
Herrick	10.4 m at 2.63 g/t	5.1 m at 4.11 g/t	19.9 m at 1.57 g/t
Caswell	2.5 m at 4.52 g/t		

CONTACT INFORMATION  
 James R Trusler, P.Eng, CEO  
 416.565.5616  
[jtrusler@platinex.com](mailto:jtrusler@platinex.com)  
[www.platinex.com](http://www.platinex.com)

